



July 25, 2023 TROPICAL CYCLONE ADVISORY NO. 6

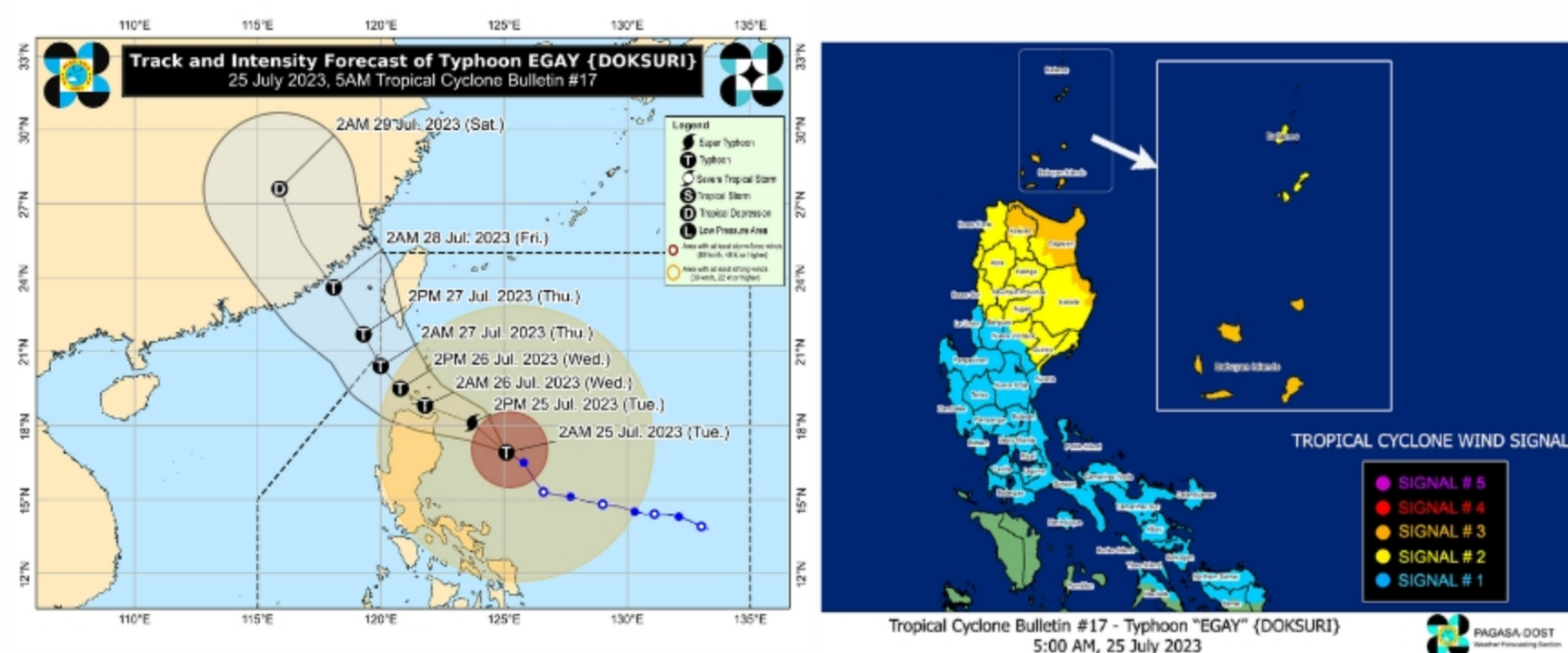
TROPICAL CYCLONE UPDATE

Issued at 5:00 AM, July 25, 2023

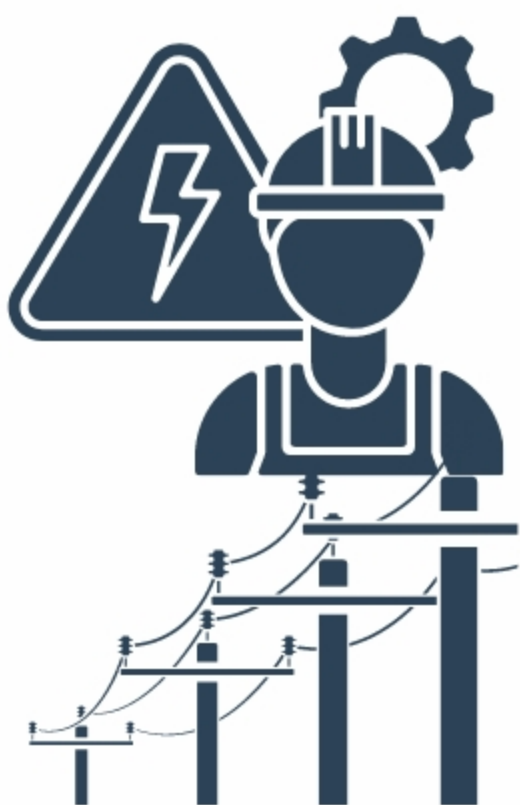
EGay further intensifies and is nearing Super Typhoon category

The center of the eye of Typhoon EGAY was estimated based on all available data including those from Daet Doppler Weather Radar at 350 km East of Tuguegarao City, Cagayan (17.2°N, 125.0°E)

TRACK



THE FOLLOWING ARE ADVISED:



- To take the appropriate contingency measures in order to mitigate the impacts of the potential threats that might affect your electric service to your consumers.
- To activate your Emergency Response Organization (ERO) accordingly when the need arises to implement without delay the appropriate emergency response plans.
- To keep monitoring the weather conditions with the PAGASA.
- To ensure that materials/buffer stocks needed are readily available and prepositioned incase of restoration.

AFTER THE WEATHER DISTURBANCE, YOU ARE REQUIRED TO:

- To restore electric service to areas that were not affected by the weather disturbance but were temporarily disconnected for safety reasons; and
- To submit the damage and power situation reports to NEA Disaster Risk Reduction and Management Department using the attached template including the schedule of partial and complete electric service restoration to consumers to their email at nea.drrmdts@yahoo.com whether or not there is/are damages or power interruption/s brought about by the said weather disturbance. The said reports should be submitted before the 12nn cut-off and once again before the 3pm cut-off. For any concerns you may contact NEA DRRMD at (02) 8928-3013.

POWER SITUATION REPORT TEMPLATE

NEA DRRMD

EC NAME
POWER MONITORING REPORT
Typhoon "-----"/Earthquake
(As of Date _____ TIME _____)

Daily Cut-off time are 1200P and 300P (Military time format)

Municipalities/ Cities	Total Barangay Counts	Barangays Restored (Count)	% of Barangays Restored	Consumer Connections							Target Date of Full Restoration	Estimated Cost of Damaged (Php)	Remarks			
				Total Consumer Connections (Count)	Total Residential Connections (Count)	Total Low Voltage Connections (Count)	Total High Voltage Connections (Count)	Residential Connections Restored (Count)	Low Voltage Connections Restored (Count)	High Voltage Connections Restored (Count)				Residential Connections For Restoration (Count)	Low Voltage Connections For Restoration (Count)	High Voltage Connections For Restoration (Count)
1			0%	0												
2			0%	0												
3			0%	0												
4			0%	0												
5			0%	0												
6			0%	0												
7			0%	0												
8			0%	0												
9			0%	0												
10			0%	0												
11			0%	0												
12			0%	0												
13			0%	0												
14			0%	0												
15			0%	0												
16			0%	0												
17			0%	0												
18			0%	0												
19			0%	0												
20			0%	0												
21			0%	0												
22			0%	0												
23			0%	0												
24			0%	0												
25			0%	0												
26			0%	0												
27			0%	0												
28			0%	0												
29			0%	0												
30			0%	0												
31			0%	0												
32			0%	0												
33			0%	0												
34			0%	0												
35			0%	0												
36			0%	0												
37			0%	0												
38			0%	0												
39			0%	0												
40			0%	0												
41			0%	0												
42			0%	0												
43			0%	0												
44			0%	0												
45			0%	0												
46			0%	0												
47			0%	0												
48			0%	0												
49			0%	0												
50			0%	0												
51			0%	0												
52			0%	0												
53			0%	0												
54			0%	0												
55			0%	0												
56			0%	0												
57			0%	0												
58			0%	0												
59			0%	0												
60			0%	0												
61			0%	0												
62			0%	0												
63			0%	0												
64			0%	0												
65			0%	0												
66			0%	0												
67			0%	0												
68			0%	0												
69			0%	0												
70			0%	0												
71			0%	0												
72			0%	0												
73			0%	0												
74			0%	0												
75			0%	0												
76			0%	0												
77			0%	0												
78			0%	0												
79			0%	0												
80			0%	0												
81			0%	0												
82			0%	0												
83			0%	0												
84			0%	0												
85			0%	0												
86			0%	0												
87			0%	0												
88			0%	0												
89			0%	0												
90			0%	0												
91			0%	0												
92			0%	0												
93			0%	0												
94			0%	0												
95			0%	0												
96			0%	0												
97			0%	0												
98			0%	0												
99			0%	0												
100			0%	0												
TOTAL	0	0	#DIV/0!	0								0	#REF!			

Certified by:
Emergency Response Manager (General Manager)